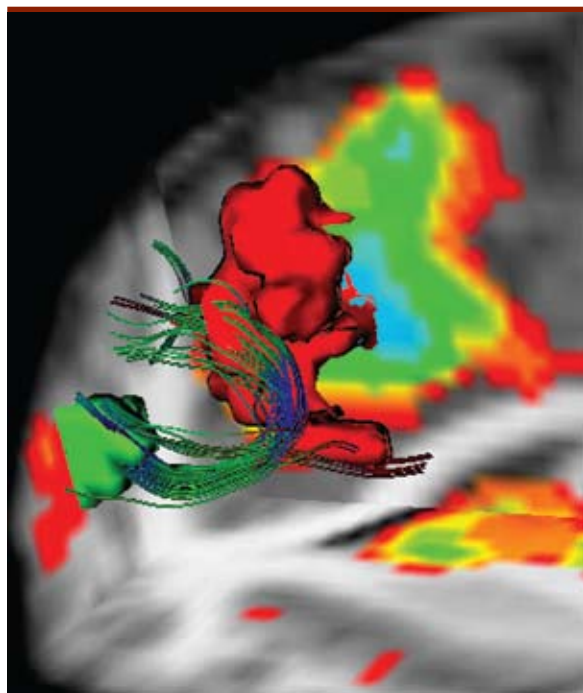




2<sup>ND</sup> ANNUAL MEETING OF THE  
**AMERICAN SOCIETY  
OF FUNCTIONAL  
NEURORADIOLOGY**



February  
27 - 29, 2008

Rosen Shingle Creek  
Orlando, Florida

To submit a Scientific Poster before the December 20, 2007 deadline, visit

[www.asfnr.org](http://www.asfnr.org)

15 *AMA PRA Category 1 Credits*<sup>TM</sup>



**Educational Symposia**

## ABOUT THE MEETING

The American Society of Functional Neuroradiology is proud to present its 2nd Annual Meeting. This 2 ½ day meeting promises to be very exciting and practical. A series of focus sessions with didactics lectures, panel discussions, and “How-To” Sessions by nationally recognized experts will cover a broad range of cutting-edge topics in functional neuroradiology, including functional

brain mapping, diffusion tensor, perfusion, molecular/metabolic, and electrophysiologic imaging. Details on physical principles, techniques as well as clinical applications of these state-of-the-art and emerging technologies will be discussed along with practical suggestions for implementation in a clinical practice setting.



## TARGET AUDIENCE

This CME activity is intended to educate neuroradiologists, neurosurgeons, neurologists, neuropsychologists, cognitive neuroscientists and MR technologists as well as fellows, residents, doctoral and post-doctoral students in these fields.

## SCIENTIFIC SPONSOR

Educational Symposia

## ACCREDITATION

**Physicians:** This activity has been planned and implemented in accordance with the Essential Areas and policies of the Accreditation Council for Continuing Medical Education through the joint sponsorship of Educational Symposia and the American Society of Functional Neuroradiology. Educational Symposia is accredited by the ACCME to provide continuing medical education for physicians.

Educational Symposia designates this educational activity for a maximum of 15 *AMA PRA Category 1 Credit(s)*<sup>TM</sup>. Physicians should only claim credit commensurate with the extent of their participation in the activity.

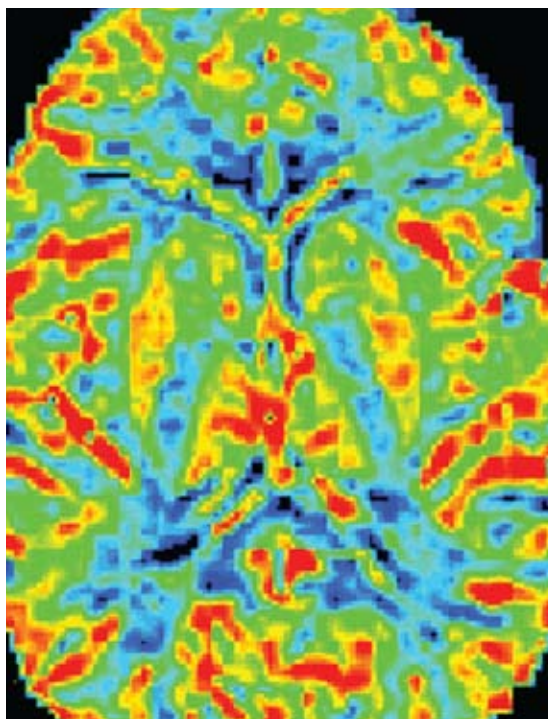
**Technologists:** This program has been submitted to the American Society of Radiologic Technologists. The number of A CE credits offered will be available approximately 30 days prior to the meeting. Please visit [www.asfnr.org](http://www.asfnr.org) or call 1-800-338-5901 regarding the availability of Category A CE credit.

## EDUCATIONAL OBJECTIVES

Attendees should, at the completion of this meeting, be able to:

- Describe the underlying physical basis of advanced functional and physiological imaging techniques such as fMRI, DTI, Perfusion, MEG and molecular/metabolic imaging.
- Become familiar with the clinical applications and limitations of advanced functional and physiological imaging techniques.
- Discuss how to effectively integrate such techniques into clinical practice, with awareness of pertinent economic issues.

*No special educational preparation is required for this CME activity.*



## ACKNOWLEDGEMENT

The American Society of Functional Neuroradiology and Educational Symposia gratefully acknowledge the following corporate supporters and exhibitors:

4D Neuroimaging

Kyron Clinical Imaging

NordicNeuroLab

Elekta Neuromag

Lippincott Williams & Wilkins

Siemens Medical Solutions

GE Healthcare Technologies

Mosby/Saunders

Invivo Corporation

Neurognostics

*\*As of November 15, 2007*

## REGISTRATION INFORMATION

Registration includes all meeting materials, including a comprehensive meeting syllabus, daily continental breakfasts and coffee breaks, welcome reception, Breakfast How-To Sessions and Lunch How-To Sessions. Early registration is strongly suggested. There will be a \$50 late fee on registrations received after January 28, 2008.

Cancellations must be received in writing. A \$75 processing fee will be applied to all cancellations. Refunds requested in writing prior to January 28, 2008 will be issued less the \$75 processing fee. No refunds will be given for requests received on or after January 28, 2008.

# 4 EASY WAYS TO REGISTER

WE ACCEPT:



### INTERNET

Register online using your credit card at:

<http://www.asfnr.org>



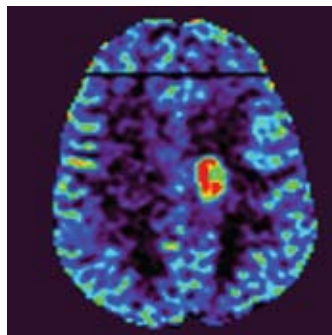
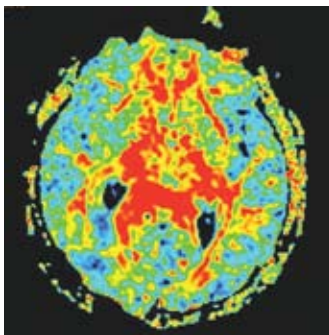
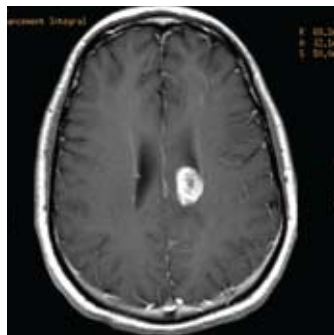
**MAIL** your registration form, along with your credit card number and signature or check payable to ASFNR to:

Educational Symposia  
5620 West Sligh Avenue  
Tampa, FL 33634-4490

**FAX** your registration form to: (800)344-0668 (toll-free, U.S. & Canada) or (813) 806-1001 (direct). Please include your MasterCard, VISA, NOVUS/Discover Card or American Express information, including your signature.

### PHONE

(800) 338-5901 (toll-free, U.S. & Canada) or (813) 806-1000 (direct). Please have your MasterCard, VISA, NOVUS/Discover Card or American Express information available.



### DISCLAIMER

Educational Symposia (ESI) and the American Society of Functional Neuroradiology as planners and presenters of this meeting, and Professional Travel as the official travel agency for this meeting, claim no liability for the acts of any suppliers or the safety of any attendees while in transit to, from, or during this event or any optional activities. The total amount of liability, if any, for the meeting organizer is limited to a refund of the registration fee, and Professional Travel's responsibility is limited to that of an agent.

### SPECIAL NOTE FOR THE DISABLED



Educational Symposia and the American Society of Functional Neuroradiology wishes to ensure that no individual with a disability is excluded, denied services, segregated or otherwise treated differently from other individuals because of the absence of auxiliary aids and services. If you need any auxiliary aids or services identified in the Americans with Disabilities Act, please contact our office at (800) 338-5901 or (813) 806-1000.

**PROGRAM COMMITTEE CHAIR: JEFFREY R. PETRELLA, M.D.**

**PROGRAM COMMITTEE CO-CHAIR: JAY J. PILLAI, M.D.**

**PROGRAM COMMITTEE:**

**MICHELLE BRADBURY, M.D., PH.D.**

**SCOTT H. FARO, M.D.**

**MENG LAW, M.D., MBBS, FRACR**

**JOSEPH A. MALDJIAN, M.D.**

**PRATIK MUKHERJEE, M.D.**

**TIMOTHY P.L. ROBERTS, PH.D.**

**KEITH R. THULBORN, M.D., PH.D.**

**JOHN L. ULMER, M.D.**

## FACULTY

**Archie A. Alexander, M.D., J.D., LL.M.**

*Attorney at Law*

*Austin, TX*

**Daniel Barboriak, M.D.**

*Associate Professor of Radiology*

*Duke University Medical Center*

*Durham, NC*

**Peter B. Barker, D.Phil.**

*Professor*

*Russell H. Morgan Department of*

*Radiology and Radiological Science*

*Johns Hopkins University School of*

*Medicine*

**Michelle Bradbury, M.D., Ph.D.**

*Assistant Professor*

*Department of Radiology*

*Memorial Sloan-Kettering Cancer Center*

*New York, NY*

**Kim M. Cecil, Ph.D.**

*Assistant Professor of Radiology*

*and Pediatrics*

*University of Cincinnati*

*Children's Hospital Medical Center*

**Cecil Charles Ph.D.**

*Associate Professor of Radiology*

*Director, Duke Image Analysis Laboratory*

*Co-Director, Center for Advanced MR*

*Development*

*Core Leader, Duke Translational Research*

*Institute*

**Andrew R. Deibler, M.D.**

*Radiology Resident*

*Wake Forest University Baptist*

*Medical Center*

**John W. Dell, IV, BS, R.T., MR**

*Children's Hospital of Philadelphia*

*Philadelphia, PA*

**Scott H. Faro, M.D.**

*Professor and Vice Chairman of Radiology*

*Director of Functional Brain Imaging*

*Center and Clinical MRI*

*Temple University of Medicine*

*Philadelphia, PA*

**Aaron S. Field, M.D., Ph.D.**

*Assistant Professor of Radiology and*

*Biomedical Engineering*

*Department of Radiology,*

*Neuroradiology Division*

*University of Wisconsin School of*

*Medicine and Public Health*

**Gerald Grant, M.D.**

*Assistant Professor, Pediatric Neurosurgery*

*Duke University Medical Center*

*Durham, NC*

**Andrei I. Holodny, M.D.**

*Chief of the Neuroradiology Service*

*Director of the Functional MRI Laboratory*

*Department of Radiology*

*Memorial Sloan-Kettering Cancer Center*

*Associate Professor of Radiology*

*Weill Medical College of Cornell University*

**Christopher D. Lascola, M.D., Ph.D.**

*Assistant Professor*

*Radiology and Neurobiology*

*Brain Imaging and Analysis Center*

*Duke University Medical Center*

**Meng Law, M.D., MBBS, FRACR**

*Associate Professor of Radiology and*

*Neurosurgery*

*Mount Sinai Medical Center*

*New York, NY*

**Oula Penate Medina, Ph.D.**

*Research Fellow*

*Memorial Sloan-Kettering Cancer Center*

*New York, NY*

**Elias R. Melhem, M.D., Ph.D.**

*Professor of Radiology and Neurosurgery*

*Director of Neuroradiology*

*University of Pennsylvania*

**David J. Mikulis, M.D.**

*Director of MRI*

*Department of Medical Imaging*

*The University of Toronto*

*The Toronto Western Hospital*

*Toronto, Canada*

**Chad H. Moritz, R.T.**

*fMRI Research Program Manager*

*Radiology Department*

*University of Wisconsin School of*

*Medicine and Public Health*

**Pratik Mukherjee, M.D.**

*Assistant Professor of Radiology and*

*Bioengineering*

*Attending Neuroradiologist*

*University of California, San Francisco*

**Srinivasan Mukundan, Jr., M.D., Ph.D.**

*Assistant Professor*

*Departments of Radiology, Biomedical*

*Engineering, and Chemistry*

*Duke University Medical Center*

**Jeffrey R. Petrella, M.D.**

*Associate Professor*

*Division of Neuroradiology*

*Director, Alzheimer's Imaging Research*

*Laboratory*

*Duke University Medical Center*

**Jay J. Pillai, M.D.**

*Division of Neuroradiology*

*Russell H. Morgan Department of*

*Radiology and Radiological Science*

*The Johns Hopkins University School of*

*Medicine & The Johns Hopkins Hospital*

**Jeffrey M. Pollock, M.D.**

*Clinical Instructor*

*Wake Forest University School of Medicine*

*Winston-Salem, NC*

**Steven E. Prince, Ph.D.**

*Research Associate*

*Alzheimer's Imaging Research Laboratory*

*Department of Radiology*

*Duke University Medical Center*

**Kari A. Pulfer, R.T.**

*Researcher*

*University of Wisconsin*

*Madison, WI*

**Timothy P.L. Roberts, Ph.D.**

*Oberkircher Family Chair in Pediatric*

*Radiology*

*Vice-chair, Research*

*Children's Hospital of Philadelphia*

*Professor of Radiology*

*University of Pennsylvania School of*

*Medicine*

**Howard A. Rowley, M.D.**

*Chief of Neuroradiology*

*Joseph Sackett Professor of Radiology*

*Associate Professor, Radiology, Neurology*

*and Neurosurgery*

*University of Wisconsin*

*Madison, WI*

**Keith R. Thulborn, M.D., Ph.D.**

*Professor of Radiology, Physiology and*

*Biophysics*

*Director, Center for MR Research*

*University of Illinois Medical Center at*

*Chicago*

**John L. Ulmer, M.D.**

*Professor of Radiology*

*Neuroradiology Section*

*Chief of Neuroradiology Research*

*Director of Functional MRI*

*Froedert Hospital*

*Milwaukee, WI*

**James T. Voyvodic, Ph.D.**

*Assistant Professor, Radiology and*

*Neurobiology*

*Brain Imaging and Analysis Center*

*Duke University Medical Center*

*Durham, NC*

**Thomas West, M.D.**

*Wake Forest University*

*Winston-Salem, NC*

**Ronald L. Wolf, M.D., Ph.D.**

*Assistant Professor of Radiology*

*University of Pennsylvania Medical Center*

**Deborah Zarnow, M.D.**

*Staff Neuroradiologist/Assistant*

*Professor of Radiology*

*The Children's Hospital of Philadelphia*

*Philadelphia, PA*

**IF YOU RECEIVE MORE THAN ONE BROCHURE,  
PLEASE PASS THE EXTRA ALONG TO A COLLEAGUE.**

# PROGRAM

---

TUESDAY, FEBRUARY 26, 2008

5:00 – 6:00 P.M. Registration

WEDNESDAY, FEBRUARY 27, 2008

7:30 – 8:25 A.M. Continental Breakfast For Registrants

8:25 Opening Remarks  
*Jeffrey R. Petrella, M.D., ASFNR President*

---

## BOLD IMAGING

- 8:30 Diagnostic BOLD fMRI Mapping: Imaging Mechanisms, Accuracy, and Reproducibility  
*James T. Voyvodic, Ph.D.*
- 9:00 Clinical fMRI Interpretation: Pearls and Pitfalls  
*Andrei I. Holodny, M.D.*
- 9:30 Pre-surgical Mapping: The Neurosurgeon's Perspective  
*Gerald A. Grant, M.D.*
- 10:00 - 10:30 Coffee Break For Registrants

---

## DIFFUSION TENSOR IMAGING

- 10:30 The Essentials of DTI and Fiber Tractography  
*Aaron S. Field, M.D., Ph.D.*
- 11:00 Fiber Tracking for Pre-surgical Planning and Other Applications: Possibilities and Limitations  
*Elias R. Melham, M.D., Ph.D.*
- 11:30 Beyond the Tensor: New Horizons in Diffusion Imaging and Tractography  
*Pratik Mukherjee, M.D.*
- 12:00 - 1:30 P.M. Lunch On Your Own

---

## FUNCTIONAL AND STRUCTURAL BRAIN MAPPING

- 1:30 Practical Functional Neuroanatomy for Presurgical Mapping: fMRI and DTI  
*John L. Ulmer, M.D.*
- 2:00 Applications of fMRI and DTI in Cognitive Disorders  
*Steven E. Prince, Ph.D.*
- 2:30 Technologist's Perspective: fMRI and DTI  
*Chad H. Moritz, R.T.*
- 2:45– 3:15 Coffee Break For Registrants

---

## SPECIAL ISSUES FORUM

- 3:15 Translating Functional Brain Mapping into Clinical Practice: Hurdles and Solutions – Panel Discussion  
Moderator: *John L. Ulmer, M.D.*  
*Scott H. Faro, M.D.*  
*Andrei I. Holodny, M.D.*  
*Jay J. Pillai, M.D.*  
*Keith R. Thulborn, M.D., Ph.D.*  
*James T. Voyvodic, Ph.D.*
- 4:00 Medicolegal Issues in Functional Neuroimaging  
*Archie A. Alexander, M.D., J.D., LL.M.*
- 4:30 **Victor M. Houghton, M.D. Honorary Lecture:** Forecasting the Future of Functional Imaging: What Will be the Radiologist's Role?  
*Cecil Charles, Ph.D.*
- 5:00 End of Session

(WEDNESDAY, FEBRUARY 27, 2008 CONTINUED)

5:00 – 7:00 Welcome Reception –  
*Sponsored by Elekta Neuromag*

THURSDAY, FEBRUARY 28, 2008

7:30 – 8:30 A.M. Continental Breakfast For Registrants

7:45 – 8:15 Breakfast “How-To Session”  
Anatomy of a Paradigm  
*Edgar (Ted) DeYoe, Ph.D.*  
Sponsored by Kyron Clinical Imaging  
(not accredited for AMA PRA Category 1 Credits™)

---

## ELECTROPHYSIOLOGICAL IMAGING

- 8:30 Physical Principles of MEG  
*Timothy P.L. Roberts, Ph.D.*
- 8:55 MEG for Pre-surgical Planning and Localization of Seizure Foci: Advantages Over fMRI  
*Deborah Zarnow, M.D.*
- 9:20 Transcranial Magnetic Stimulation  
*TBD*
- 9:45 Technologist's Perspective: MEG  
*John W. Dell, IV, BS, R.T.*
- 10:00 – 10:30 Coffee Break For Registrants

---

## PERFUSION IMAGING

- 10:30 Perfusion and Permeability Imaging: Principles and Techniques  
*Daniel Barboriak, M.D.*
- 11:00 Perfusion Imaging in Stroke Management – Evidence from Clinical Trials  
*Howard A. Rowley, M.D.*
- 11:30 Perfusion and Permeability Imaging as Part of an Integrated Evaluation of Brain Tumors  
*Meng Law, M.D., MBBS, FRACR*
- 12:00 P.M. Pick up Boxed Lunch for Lunch “How-To Session”
- 12:10 Lunch “How-To Session”  
*Sponsored by Invivo Corporation*  
(not accredited for AMA PRA Category 1 Credits™)

---

## PERFUSION IMAGING II

- 1:30 Perfusion and Permeability Imaging: Standardization and Guidelines Panel Discussion  
Moderator: *Timothy P.L. Roberts, Ph.D.*  
*Daniel Barboriak, M.D.*  
*Meng Law, M.D., MBBS, FRACR*  
*Elias R. Melhem, M.D., Ph.D.*  
*David J. Mikulis, M.D.*  
*Ronald L. Wolf, M.D., Ph.D.*
- 2:00 Technologist's Perspective: Perfusion Imaging  
*Kari A. Pulfer, R.T.*
- 2:10 Arterial Spin Labeling: Technique, Pitfalls and Artifacts  
*Andrew R. Deibler, M.D.*
- 2:30 Arterial Spin Labeling in Stroke Management and Brain Tumor Evaluation: Experience in Over 2000 Cases  
*Jeffrey M. Pollock, M.D. and Thomas West, M.D.*

3:00 - 3:30 Coffee Break For Registrants

---

## MOLECULAR IMAGING

- 3:30 Molecular Imaging: An Introduction  
*Michelle Bradbury, M.D., Ph.D.*

- 4:00 Liposomes as CT and MR Contrast Agents  
*Srinivasan Mukundan, Jr., M.D., Ph.D.*
- 4:30 Small Molecule Imaging with Novel MR Contrast Mechanisms  
*Christopher D. Lascola, M.D., Ph.D.*
- 5:00 End Of Session

FRIDAY, FEBRUARY 29, 2008

- 7:30 – 8:30 A.M. Continental Breakfast For Registrants
- 7:45 – 8:15 Breakfast “How-To Session”  
Sponsored by GE Healthcare Technologies  
*(not accredited for AMA PRA Category 1 Credits™)*

METABOLIC IMAGING

- 8:30 MR Spectroscopy and Chemical Shift Imaging: Physical Principles  
*Peter B. Barker, D.Phil.*
- 9:00 MRS for Cerebral Metabolic Disease and Lesion Characterization  
*Kim M. Cecil, Ph.D.*

- 9:30 Metabolomics and its Future Impact on Neuroimaging  
*TBD*
- 10:00 – 10:30 Coffee Break For Registrants
- EMERGING TECHNIQUES
- 10:30 Non-Proton MR Imaging as an Alternative to PET  
*Keith R. Thulborn, M.D., Ph.D.*
- 11:00 Future Applications of Nanotechnology in Imaging  
*Oula Penate Medina, Ph.D.*
- 11:30 The “Omics” Revolution – Why Should a Neuroradiologist Care?  
*Jeffrey R. Petrella, M.D.*
- 11:55 Closing Remarks  
*Jeffrey R. Petrella, M.D., ASFNR President*
- 12:00 P.M. End of Meeting

Facility & topics subject to change.

REGISTRATION FORM FEE REGISTER ONLINE: www.asfnr.org

<p>2nd Annual Meeting of the <b>American Society of Functional Neuroradiology</b> Rosen Shingle Creek • Orlando, Florida February 27 - 29, 2008 15 AMA PRA Category 1 Credit(s)<sup>TM</sup></p> <p>Early registration is strongly suggested. <b>There will be a \$50 late fee for registrations received after January 28, 2008.</b></p>	<p><b>\$395</b></p> <p><input type="checkbox"/> <b>ASFNR Member</b> * The deadline to apply for ASFNR membership in order to qualify for the reduced member fee of \$ 395.00 is January 22, 2008.</p>
	<p><b>\$495</b></p> <p><input type="checkbox"/> <b>Non Member</b></p>
	<p><b>\$195</b></p> <p><input type="checkbox"/> <b>Technologists*</b>    <input type="checkbox"/> <b>Retired</b> <input type="checkbox"/> <b>Fellows*</b>            <input type="checkbox"/> <b>Full Time Military*</b></p> <p>* A letter from your Program Director verifying your status to qualify for the reduced fee must accompany your registration.</p>

ASFN08

Name \_\_\_\_\_  
First Middle Last

Degree  M.D.    D.O.    Ph.D.    P.A.    R.T.    Other \_\_\_\_\_

Specialty \_\_\_\_\_





Facility/Organization \_\_\_\_\_ Dept. \_\_\_\_\_  
 HOME  
 OFFICE

Street Address \_\_\_\_\_

City \_\_\_\_\_ State \_\_\_\_\_ Zip \_\_\_\_\_

Phone \_\_\_\_\_ Fax \_\_\_\_\_

E-mail \_\_\_\_\_

**PAYMENT INFORMATION:**  Check Enclosed     Charge to Credit Card:    

Card Number \_\_\_\_\_ Expires \_\_\_\_\_

Card Security Code\* \_\_\_\_\_  
\*In order to process your registration we will need the security code on your credit card. If you have a MasterCard, Visa or Discover the 3 digit code will be found on the back of your card in the space provided for your signature (it will be the last 3 digits shown). American Express prints their 4 digit security code on the front of the card above the last digit of your AMEX number.

Signature \_\_\_\_\_ (Your signature is your authorization to charge this credit card.)

**IF CREDIT CARD NAME OR BILLING ADDRESS DIFFERS FROM THE ADDRESS LISTED ABOVE, PLEASE PROVIDE THE CORRECT BILLING ADDRESS**

Name on Card \_\_\_\_\_  
Billing Address \_\_\_\_\_  
City \_\_\_\_\_ State \_\_\_\_\_ Zip \_\_\_\_\_

Please make checks payable to ASFNR, and mail with this completed form to Educational Symposia, 5620 West Sligh Avenue, Tampa, Florida 33634-4490. A \$75.00 processing charge will be made on refunds requested in writing prior to January 28, 2008. No refunds will be given on or after January 28, 2008. For further information, call (800) 338-5901 (toll-free, U.S. & Canada), (813) 806-1000 (direct), or fax (800) 344-0668 (toll-free, U.S. & Canada) or (813) 806-1001 (fax, direct), or e-mail at [info@edusymp.com](mailto:info@edusymp.com).

# ACCOMMODATIONS



Rosen Shingle Creek Hotel located on Universal Boulevard is situated on 230 acres of lush landscape. Central Florida's newest and most luxurious meeting destination, the history of Shingle Creek reveals the captivating tale of how its majestic cypress trees provided some much needed shelter for early settlers and their homes. Today, our stunning grand lobby welcomes you into a world of lavish choices, complete with luxury accommodations, enticing restaurants and a championship golf course.



Our 1,500 guest rooms offer luxurious first-class settings that capture the resort environment. Capitalizing on Rosen Shingle Creek's elevation, our guest rooms offer a stunning view of the golf course or recreation areas often an incomparable setting - from the perfectly manicured fairways and greens to the picturesque creek, magnificent cypress trees, and lush natural vegetation. For vacationers or meeting guests, it's hard to imagine a better way to start the day than with the view from these rooms.

You'll find everything from the Orange County Convention Center, Universal Orlando, SeaWorld® Adventure Park to a variety of other Orlando, Florida attractions nearby. And because we are conveniently located just off of Universal Boulevard, Orlando's meetings, conventions, and popular attractions are all within reach.

**MAKE YOUR RESERVATION AS SOON AS POSSIBLE AS OUR ROOM BLOCK MAY SELL OUT PRIOR TO THE CUT-OFF DATE OF January 26, 2008. After this date, reservations will be accepted at the discretion of the hotel, on a space and rate available basis.**

**You may also reserve your room online at: [www.asfnr.org](http://www.asfnr.org)**

**Identify yourself as a registrant of the 2nd Annual Meeting of the American Society of Functional Neuroradiology to qualify for special discounted group room rates! Rates cannot be changed at check-in or check-out for guests who fail to identify their affiliation at the time the reservation is made.**

## ACCOMMODATIONS

**Call for Reservations: 1 (866) 996-6338**

### SPECIAL DISCOUNTED GROUP ROOM RATES:

**Single/Double Occupancy**

**\$239<sup>00</sup> per night**

**All Non Smoking Rooms**

**2nd Annual Meeting of the American Society of Functional Neuroradiology**

**Rosen Shingle Creek  
Orlando, Florida  
February 26 - 29, 2008**

Reservations must be made by January 26, 2008. Group room rates may be available three (3) days prior and after meeting, subject to availability and confirmation by the hotel. Please note that these rates do not reflect the current state and local taxes, currently 12.5% and 1% Orange County Convention Center surcharge (all taxes subject to change). More than 2 people subject to additional charge of \$20 per person per night. Children seventeen (17) years and under stay free when sharing with an adult utilizing existing bedding. Individual departure dates will be reconfirmed upon check-in. Changes should be made at that time. Changes made thereafter will result in a \$50 fee. Check-in is 3pm; Check-out is 11am.

Name \_\_\_\_\_

Mailing Address \_\_\_\_\_

City \_\_\_\_\_ State \_\_\_\_\_ Zip \_\_\_\_\_

Daytime Phone \_\_\_\_\_ Fax \_\_\_\_\_

Date of Arrival \_\_\_\_\_ Time of Arrival \_\_\_\_\_ Date of Departure \_\_\_\_\_ Time of Departure \_\_\_\_\_

I prefer to pay with the following credit card the amount of first night's stay, plus tax:



Card Number \_\_\_\_\_ Expiration Date \_\_\_\_\_

Authorization Signature \_\_\_\_\_

(Your signature is your authorization to charge this credit card)

**Deposit:** To reserve your room using a credit card, you may call reservations at (866) 996-6338. Credit cards will be charged one night's room plus tax. Remember to identify yourself as a registrant of the 2nd Annual Meeting of the American Society of Functional Neuroradiology in order to qualify for the special discounted group room rates. **Cancellation:** Individual deposits are refundable if cancelled up to five (5) days prior to arrival. **Please note:** There are three (3) Rosen Hotels. The American Society of Functional Neuroradiology is being held at the Rosen Shingle Creek on Universal Boulevard. Call Professional Travel (official travel agency) at (800) 237-7230 (toll free U.S. and Canada) or (813) 806-1050 (direct) if you have any questions or problems making your hotel reservations or prefer alternate accommodations. Please photocopy this form for additional registrants.