

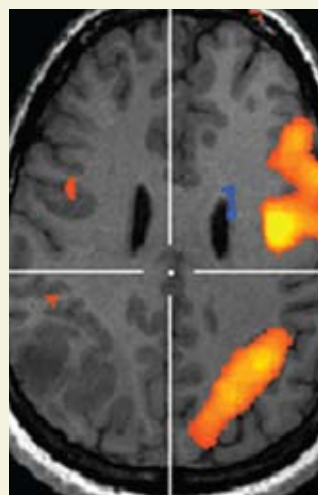
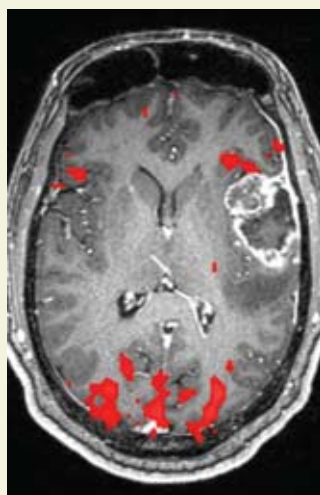
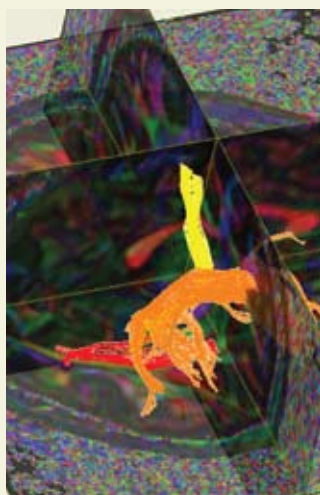
3rd Annual Meeting of the

American Society of Functional Neuroradiology

February 25 - 27, 2009

Omni La Mansión del Rio
San Antonio, Texas

17.5 AMA PRA Category 1 Credits™



About the Meeting

The American Society of Functional Neuroradiology is proud to present its 3rd Annual Meeting. This 2 ½ day course promises to be very exciting and practical. A series of focused sessions with didactic lectures, panel discussions and "How-to" Sessions by nationally recognized experts will cover a broad range of cutting-edge topics in functional neuroradiology, including functional brain mapping, diffusion tensor, perfusion, molecular/metabolic and electrophysiologic imaging. Details on physical principles, techniques, as well as clinical applications of these state-of-the-art and emerging technologies will be discussed along with practical suggestions for implementation in a clinical practice setting. This year a disease-oriented approach to the utilization of these techniques will be taken to emphasize the integration and complementary nature of these different techniques.

Target Audience

This CME activity is intended to educate neuroradiologists, neurosurgeons, neurologists, neuropsychologists, cognitive neuroscientists and MR technologists as well as fellows, residents, doctoral and post-doctoral students in these fields.

Scientific Sponsor

Educational Symposia

Accreditation

Physicians: This activity has been planned and implemented in accordance with the Essential Areas and policies of the Accreditation Council for Continuing Medical Education (ACCME) through the joint sponsorship of Educational Symposia and the American Society of Functional Neuroradiology. Educational Symposia is accredited by the ACCME to provide continuing medical education for physicians.

Educational Symposia designates this educational activity for a maximum of 17.5 *AMA PRA Category 1 Credit(s)*TM. Physicians should only claim credit commensurate with the extent of their participation in the activity.

Technologists: This program has been submitted to the ASRT. The number of Category A CE credits will be available approximately 30 days prior to the meeting. Please visit www.edusymp.com or call 1-800-338-5901 regarding the availability of Category A CE credit.

Educational Objectives

Attendees should, at the completion of this course, be able to:

- Describe the underlying physical basis of advanced functional and physiological imaging techniques such as fMRI, DTI, Perfusion, MEG and molecular/metabolic imaging.
- Become familiar with the clinical applications and limitations of advanced functional and physiological imaging techniques.
- Discuss how to effectively integrate such techniques into clinical practice, with awareness of pertinent economic and logistical issues.

No special educational preparation is required for this CME activity.

Disclaimer

Educational Symposia (ESI) and the American Society of Functional Neuroradiology as planner and presenter of this meeting, and Professional Travel as the official travel agency for this meeting, claim no liability for the acts of any suppliers or the safety of any attendees while in transit to, from, or during this event or any optional activities. The total amount of liability, if any, for the meeting organizer is limited to a refund of the registration fee, and Professional Travel's responsibility is limited to that of an agent.

Special Note for the Disabled



Educational Symposia and the American Society of Functional Neuroradiology wishes to ensure that no individual with a disability is excluded, denied services, segregated or otherwise treated differently from other individuals because of the absence of auxiliary aids and services. If you need any auxiliary aids or services identified in the Americans with Disabilities Act, please contact our office at (800) 338-5901 or (813) 806-1000.

Registration Information

Payment of the registration includes all course materials, including a comprehensive course syllabus, daily continental breakfasts and coffee breaks. Early registration is strongly suggested. There will be a \$50 surcharge for anyone registering after January 16, 2009. Minimum and maximum attendance levels have been established for this meeting. If your registration cannot be accepted, you will be issued a full registration refund.

Cancellations must be received in writing. A \$75 processing fee will be applied to all cancellations. Refunds requested in writing prior to January 16, 2009 will be issued for the amount of registration paid, less the \$75 processing fee. No refunds will be made on or after that date.

4 Easy Ways To Register



Internet

Register online using your credit card number at:

<http://www.asfnr.org>

REGISTER ON OUR SECURE WEBSITE!!

MAIL your meeting registration form, along with your credit card number and signature or check payable to ASFNr, to:

Educational Symposia
5620 West Sligh Avenue
Tampa, Florida 33634-4490



FAX your meeting registration form to: (800) 344-0668 (toll-free, U.S. & Canada) or (813) 806-1001 (direct). Please include your MasterCard, VISA, NOVUS/Discover Card or American Express information, including a signature.

PHONE (800) 338-5901 (toll-free, U.S. & Canada) or (813) 806-1000 (direct). Please have your MasterCard, VISA, NOVUS/Discover Card or American Express information available.

Faculty

Program Committee Chair: Jay J. Pillai, M.D.

Program Committee Co-Chair: Timothy P. L. Roberts, Ph.D.

Program Committee Members:

Joseph A. Maldjian, M.D.

Jeffrey R. Petrella, M.D.

Robert W. Young, M.D.

Pratik Mukherjee, M.D., Ph.D.

Kirk M. Welker, M.D.

Peter B. Barker, D.Phil.

*Professor
Department of Radiology
Johns Hopkins University School of Medicine
Baltimore, MD*

Michelle Bradbury, M.D., Ph.D.

*Assistant Professor
Department of Radiology
Memorial Sloan Kettering Cancer Center
New York, NY*

Scott H. Faro, M.D.

*Professor and Vice Chairman of Radiology
Director of Functional Brain Imaging
Center and Clinical MRI
Temple University School of Medicine
Philadelphia, PA*

Aaron S. Field, M.D., Ph.D.

*Associate Professor of Radiology and
Biomedical Engineering
Department of Radiology,
Neuroradiology Division
University of Wisconsin School of Medicine
and Public Health
Madison, WI*

Christopher P. Hess, M.D., Ph.D.

*Assistant Professor, Neuroradiology
Department of Radiology and
Biomedical Imaging
University of California, San Francisco
San Francisco, CA*

Andrei I. Holodny, M.D.

*Chief of the Neuroradiology Service
Director of the Functional MRI Laboratory
Department of Radiology
Memorial Sloan-Kettering Cancer Center
Professor of Radiology
Weill Medical College of Cornell University
New York, NY*

Lester Kwock, Ph.D.

*Professor of Radiology
University of North Carolina School
of Medicine
Chapel Hill, NC*

Meng Law, M.D., MBBS, FRACR

*Associate Professor of Radiology and
Neurosurgery
Mount Sinai Medical Center
New York, NY*

Lucien M. Levy, M.D., Ph.D.

*Professor of Radiology
Chief and Program Director, Neuroradiology
George Washington University
Medical Center
Washington, DC*

Joseph A. Maldjian, M.D.

*Professor and Chief of Neuroradiology
Director, Advanced Neuroscience Imaging
Research Core (ANSIR)
Wake Forest University School of Medicine
Winston-Salem, NC*

Elias R. Melhem, M.D., Ph.D.

*Wallace Miller Senior Professor
Associate Chair for Neuroradiology
Associate Chair of Education
Division Chief
Department of Radiology
University of Pennsylvania School
of Medicine
Philadelphia, PA*

David J. Mikulis, M.D.

*Professor and Co-Director of Medical
Imaging Research
Department of Medical Imaging
The University of Toronto
The University Health Network
The Toronto Western Hospital
Toronto, Canada*

Pratik Mukherjee, M.D., Ph.D.

*Associate Professor of Radiology and
Bioengineering
Attending Neuroradiologist
University of California, San Francisco
San Francisco, CA*

Godfrey D. Pearlson, M.D.

*Director, Olin Neuropsychiatry
Research Center
IOL
Hartford, CT
Professor of Psychiatry
Yale University School of Medicine
New Haven, CT*

James J. Pekar, Ph.D.

*Associate Professor of Radiology
Johns Hopkins University
Manager and Research Coordinator
F.M. Kirby Research Center for Functional
Brain Imaging
Kennedy Krieger Institute
Baltimore, MD*

Jeffrey R. Petrella, M.D.

*Associate Professor of Radiology
Division of Neuroradiology
Director, Alzheimer Disease Imaging Research
Laboratory
Duke University Medical Center
Durham, NC*

Micheal D. Phillips, M.D.

*Vice Chairman, Research and
Academic Affairs
Imaging Institute
Cleveland Clinic
Cleveland, OH*

Jay J. Pillai, M.D.

*Director of Functional MRI
Neuroradiology Division
The Russell H. Morgan Department of
Radiology and Radiological Science
Johns Hopkins University School of Medicine
Attending Neuroradiologist
The Johns Hopkins Hospital
Baltimore, MD*

Jeffrey M. Pollock, M.D.

*Assistant Professor
Oregon Health and Science University
Portland, OR*

Alfredo Quinones-Hinojosa, M.D.

*Associate Professor of Neurological Surgery
and Oncology
Neuroscience and Cellular and
Molecular Medicine
Johns Hopkins University
Baltimore, MD*

Daniel S. Reich, M.D., Ph.D

*Fellow, Division of Neuroradiology
Departments of Radiology and Neurology
Johns Hopkins University
Baltimore, MD*

Timothy P.L. Roberts, Ph.D.

*Professor of Radiology
University of Pennsylvania School
of Medicine
Oberkircher Family Chair in
Pediatric Radiology
Vice-chair, Research
Children's Hospital of Philadelphia
Philadelphia, PA*

Howard A. Rowley, M.D.

*Chief of Neuroradiology
Joseph Sackett Professor of Radiology
Professor of Radiology, Neurology and
Neurosurgery
University of Wisconsin
Madison, WI*

Erin Simon Schwartz, M.D.

*Associate Professor of Radiology
University of Pennsylvania School
of Medicine
Pediatric Neuroradiologist
The Children's Hospital of Philadelphia*

Keith R. Thulborn, M.D., Ph.D.

*Professor of Radiology, Physiology
and Biophysics
Director of the MR Research Program
Chief of Cross-Sectional Neuroradiology
Center for MR Research
Chicago, IL*

John L. Ulmer, M.D.

*Professor of Radiology
Chief of Neuroradiology
Medical College of Wisconsin
Milwaukee, WI*

Peter C.M. van Zijl, Ph.D.

*Professor of Radiology
Russell H. Morgan Department of Radiology
and Radiological Science
Johns Hopkins University School of Medicine
Director, F.M. Kirby Research Center for
Functional Brain Imaging
Hugo Moser Research Institute at
Kennedy Krieger
Baltimore, MD*

Kirk M. Welker, M.D.

*Consultant
Division of Neuroradiology
Assistant Professor of Radiology
College of Medicine
Mayo Clinic
Rochester, MN*

Ronald L. Wolf, M.D., Ph.D.

*Associate Professor of Radiology
University of Pennsylvania School
of Medicine
Philadelphia, PA*

Steve Zomberg, R.T., (R)(MR)

*Clinical Applications Coordinator for
Neuro MRI
Spectrum Health
Grand Rapids, MI*

Program

Tuesday, February 24, 2009

5:00 – 6:00 PM Registration

Wednesday, February 25, 2009

7:00 – 7:45 AM Continental Breakfast for Registrants

7:45 Welcome
Jay J. Pillai, M.D., ASFNR President

IMAGING METHODS – INTRODUCTION

8:00 Introduction to BOLD Imaging
Andrei I. Holodny, M.D.

8:30 Introduction to DTI and DT Fiber-tracking
Aaron S. Field, M.D., Ph.D.

9:00 Introduction to Proton MRS
Peter B. Barker, D.Phil.

9:30 Perfusion and Permeability Imaging
Meng Law, M.D., MBBS, FRACR

10:00 – 10:30 Coffee Break for Registrants

APPLICATIONS IN BRAIN TUMORS

10:30 Presurgical Functional Mapping:
A Neurosurgeon's Perspective
Alfredo Quiñones-Hinojosa, M.D.

11:00 Functional Anatomy of Language
Systems Relevant to Presurgical Planning
John L. Ulmer, M.D.

11:30 DWI and DTI of Brain Tumors, Including
Presurgical Mapping
Elias R. Melhem, M.D., Ph.D.

12:00 PM Clinical Impact of Integrated Physiologic
Brain Tumor Imaging
Jay J. Pillai, M.D.

12:30 Pick up Boxed Lunch for
"How-To Workstation Software Sessions"

12:40 Lunch "How-To Workstation Software Sessions"
Topic and Faculty TBD
(not accredited for *AMA PRA Category 1 Credits™*)

1:30 Panel Discussion – Economics and Reporting of
Clinical Functional Imaging – BOLD and MEG:
Challenges and How We Overcome Them

Moderator: *Scott H. Faro, M.D.*

Panel: *Scott H. Faro, M.D.; Andrei I. Holodny, M.D.;
Jeffrey R. Petrella, M.D.; Jay J. Pillai, M.D.;
Alfredo Quiñones-Hinojosa, M.D.;
Timothy P.L. Roberts, Ph.D.; John J. Ulmer, M.D.;
Kirk M. Welker, M.D.*

2:30 – 4:30 PARALLEL SESSIONS

BASIC BOLD: Parallel Session #1

Starting a Clinical fMRI Service
Moderator: Keith R. Thulborn, M.D., Ph.D.

2:30 Neuroradiologist's Perspective
Kirk M. Welker, M.D.

3:00 Technologist's Perspective
Steve Zomberg, R.T., (R)(MR)

3:30 – 4:00 Coffee Break for Registrants

4:00 MRI Physicist's Perspective
Keith R. Thulborn, M.D., Ph.D.

Wednesday, February 25, 2009 (Continued)

ADVANCED APPLICATIONS: Parallel Session #2

Molecular Imaging
Moderator: Michelle Bradbury, M.D., Ph.D.

2:30 Introduction to Molecular Imaging
Faculty TBD

3:00 Molecular Imaging II, Including Molecular Imaging
of Brain Tumors
Faculty TBD

3:30 – 4:00 Coffee Break for Registrants

4:00 Advanced Diffusion Imaging of Brain Tumors:
HARDI Technique
Pratik Mukherjee, M.D., Ph.D.

4:30 Victor M. Haughton, M.D. Honorary Lecture:
Novel Approaches for Brain Tumor Imaging
Peter C.M. van Zijl, Ph.D.

5:00 End of Session

5:00 – 6:00 Study Group Meeting #1: Molecular Imaging
Michelle Bradbury, M.D., Ph.D.

Study Group Meeting #2: BOLD
Keith R. Thulborn, M.D., Ph.D.

6:00 – 7:30 Welcome Reception

Thursday, February 26, 2009

7:00 – 7:55 AM Continental Breakfast for Registrants

7:55 Welcome
Jay J. Pillai, M.D., ASFNR President

CEREBROVASCULAR DISEASE

8:00 Dynamic Susceptibility Contrast Perfusion Imaging
Applications in Clinical Stroke Imaging
Howard A. Rowley, M.D.

8:30 Arterial Spin Labeling Applications in Stroke Imaging
Ronald L. Wolf, M.D., Ph.D.

9:00 Risk of Ischemia in Tissues Demonstrating
Paradoxical Cerebrovascular Reactivity
David J. Mikulis, M.D.

9:30 Non-Stroke Vascular Disease Imaging with ASL
Jeffrey M. Pollock, M.D.

10:00 – 10:30 Coffee Break for Registrants

EPILEPSY

10:30 DTI in Epilepsy
Christopher P. Hess, M.D., Ph.D.

11:00 MEG/BOLD in Epilepsy Presurgical Planning
Erin Simon Schwartz, M.D.

11:30 MRSI and Its Role in Epilepsy Imaging
Lester Kwock, Ph.D.

12:00 PM Pick up Boxed Lunch for "How-To Session"

12:10 Lunch "How-To Session"
Topic and Faculty TBD
(not accredited for *AMA PRA Category 1 Credits™*)

1:30 Panel Discussion – Perfusion Imaging and DTI:
Standardization and Reporting Challenges
*Aaron S. Field, M.D., Ph.D.;
Meng Law, M.D., MBBS, FRACR;
Howard A. Rowley, M.D.;
Elias R. Melhem, M.D., Ph.D.;
Pratik Mukherjee, M.D., Ph.D.;
Ronald L. Wolf, M.D., Ph.D.*

Thursday, February 26, 2009 (Continued)

NEURODEGENERATIVE, DEMYELINATING AND PSYCHIATRIC DISEASES

2:30 BOLD and DTI in Parkinson's and Other
Movement Disorders
Michael D. Phillips, M.D.

3:00 BOLD Imaging in Alzheimer's and MCI
Jeffrey R. Petrella, M.D.

3:30 – 4:00 Coffee Break for Registrants

4:00 BOLD/DTI in Psychiatric Disease I: Schizophrenia
Godfrey D. Pearson, M.D.

4:30 BOLD/DTI in Psychiatric Disease II:
Substance Abuse
Godfrey D. Pearson, M.D.

5:00 DTI/Fiber-tracking in Multiple Sclerosis
Daniel S. Reich, M.D., Ph.D.

5:30 End of Session

5:30 – 6:30 Study Group Meeting #3: MEG
Timothy P.L. Roberts, Ph.D.

Study Group Meeting #4: Perfusion/Diffusion
*Aaron S. Field, M.D., Ph.D. and
Meng Law, M.D., MBBS, FRACR*

Friday, February 27, 2009

7:00 – 7:55 AM Continental Breakfast for Registrants

7:55 Welcome
Jay J. Pillai, M.D., ASFNR President

EMERGING APPLICATIONS AND TECHNIQUES FOR FUNCTIONAL IMAGING: THE PRESENT AND THE FUTURE

8:00 Ultra High Field MRS
Peter B. Barker, D.Phil

8:30 Ultra High Field Diffusion Imaging
Pratik Mukherjee, M.D., Ph.D.

9:00 High Field Non-Proton Magnetic
Resonance Imaging
Keith R. Thulborn, M.D., Ph.D.

9:30 BOLD – Functional Connectivity Imaging
James J. Pekar, Ph.D.

10:00 – 10:15 Coffee Break for Registrants

10:15 Imaging of Olfaction: Current Knowledge
and Potential Future Clinical Applications
Lucien M. Levy, M.D., Ph.D.

10:45 Future Applications of MEG:
Functional Imaging in the 4th Dimension
Timothy P.L. Roberts, Ph.D.

11:15 Practical ASL Imaging in a Busy Clinical Practice
Joseph A. Maldjian, M.D.

11:45 Closing Remarks
Jay J. Pillai, M.D.

12:00 PM End of Meeting

If you receive more than one brochure,
please pass the extra along to a colleague.

Join ASFNR

American Society of Functional Neuroradiology Membership Information/Membership Application

Membership Categories:

Member: radiologist, neuroradiologist, physicist, or scientist who practices or has a special interest in functional neuroradiology

Associate: physician, scientist, or radiologic technologist (M.D., D.O., Ph.D., R.T.) with a special interest in functional neuroradiology but who does not fulfill the criteria for *Member* status

Student: medical, undergraduate, or graduate student, resident or fellow. Postdoctoral fellows will be considered, if they are within four years of their doctoral degree

Membership Benefits:

- Reduced Registration Fee to attend the *ASFNR Annual Meeting**
- Reduced Registration Fee to attend the *American Society of Neuroradiology (ASNR) Annual Meeting**
- Membership Certificate (*Member and Associate* only)
- Subscription to the *American Journal of Neuroradiology* at the ASNR member rate (*Member and Associate* only)
- Opportunity to join one or more ASFNR Study Groups
- Opportunity to participate in the Scientific and Business Meetings, and activities of the Society
- Serve on standing committees, propose candidates for nomination, vote and hold elected office (*Members* only)

Applying For Membership:

If you are a current member of ASNR or:

American Society of Head and Neck Radiology (ASHNR)
American Society of Pediatric Neuroradiology (ASPNR)
American Society of Spine Radiology (ASSR)
Eastern Neuroradiological Society (ENRS)
Western Neuroradiological Society (WNRS)

1. Complete #1, 2, 3, and 8 of the membership application
2. Include prorated dues

If you are not a current member of the above societies, and are applying for *Member* or *Associate* status, you must include the following:

1. Completed membership application
2. One sponsor letter. Sponsor must currently hold ASFNR *Member* status, or the equivalent from the ASNR, ASHNR, ASPNR, ASSR, ENRS, or WNRS, and be familiar with the reputation and qualifications of the applicant and applicant's involvement and/or interest in functional neuroradiology.
3. Current curriculum vitae
4. Copy of Radiology Board or Subspecialty Certification (formerly CAQ) certificate
5. Prorated dues

If you are not a current member of the above societies, and are applying for *Student* status, you must include the following:

1. Completed membership application
2. One sponsor letter. Sponsor must currently hold ASFNR *Member* status, or the equivalent from the ASNR, ASHNR, ASPNR, ASSR, ENRS, or WNRS, and be familiar with the applicant's reputation, qualifications and involvement and/or interest in functional neuroradiology.
3. Letter from your Department Chairman verifying current status and expected date of graduation
4. Current curriculum vitae
5. Prorated dues

Prorated Membership Dues

A S F N R (prorated dues include application fee)		1 st Qtr.	2 nd Qtr.	3 rd Qtr.	4 th Qtr. **
Membership Category	Annual Membership Dues	Jan-March	Apr-June	July-Sept	Oct-Dec
Member	\$50 + \$25 application fee	\$75	\$63	\$50	\$75
Associate	\$50 + \$25 application fee	\$75	\$63	\$50	\$75
Student	\$10	\$10	\$8	\$5	\$10

Each Study Group's dues are \$10 (not prorated) – add \$10 for each group membership and indicate your selected group(s) with an "X". Your Study Group membership(s) will begin upon your acceptance into Society membership.

_____ BOLD fMRI _____ Diffusion/Perfusion Imaging _____ Magnetoencephalography (MEG) _____ Molecular Neuroimaging

** When dues are paid in the 4th Quarter, membership is carried over through the end of the following calendar year.

***Deadline to Submit Membership Application:** If you wish to attend the ASFNR Annual Meeting and/or ASNR Annual Meeting, your completed application **must be received 30 days prior** to the start of the respective meeting. Log onto www.asnr.org for information on the ASNR Annual Meeting.

Membership Application Continues on Reverse Side ►

ASFNR Membership Application

(Please type or print legibly)

Return completed membership application, any required documentation, and dues payment to:
ASFNR Membership Dept. ♦ 2210 Midwest Road, Suite 207 ♦ Oak Brook, IL 60523-8205

Membership category applied for: _____ *Member* _____ *Associate* _____ *Student*

1. Name _____
First Middle Initial Last Name Degree

2. List *both* home and office (if applicable) addresses:

Home

Address _____

City/State/Province _____

Zip _____

Phone: () _____

E-Mail Address _____

(E-mail address is *required*)

Office

Institution _____

Department _____

Address _____

City/State/Province _____

Zip _____

Phone: () _____

FAX: () _____

3. Indicate with an "X" all the societies of which you are a member: _____ *ASNR* _____ *ASHNR* _____ *ASPNR*
_____ *ASSR* _____ *ENRS* _____ *WNRS*

IMPORTANT: If you **ARE a member** of any of the societies listed above, proceed to #8 ... sign and date the application, and provide the appropriate amount of prorated dues -- you do not need to complete the other sections of the application.

If you **ARE NOT a member** of any of the societies listed above, complete the entire application, and provide required documentation and prorated membership dues.

4. Indicate with an "X" if you belong to the following societies: _____ *ISMRM* _____ *OHBM*

5. If you **DO NOT** belong to any of the societies listed in #3, you must include one sponsor letter with your application. Refer to *Membership Information* on reverse side to determine qualified sponsors.

Sponsor's Name: _____

Institution: _____

Phone: () _____ E-mail _____

6. **Certification:** Board: _____ Date _____
Subspecialty Certification (formerly CAQ) _____ Date _____

7. **Fellowships:** Institution (1): _____ Dates _____
Institution (2): _____ Dates _____

8. I agree to abide by the ASFNR Constitution and any revisions thereof:

Applicant's Signature _____

Date _____

Please note: **U.S.-based applicants** may pay prorated membership dues by check (made payable to ASFNR), or credit card.
Non U.S.-based applicants must pay prorated membership dues by credit card. Payment must accompany application.

Complete the following information for credit card payment

Billing address, if different from #2 above: Check one: _____ *Home* _____ *Institution* _____ *Business Office*

Name of Institution/Affiliation: _____

Address: _____

City: _____ State/Province: _____ Zip/Postal Code: _____

Country (if other than U.S.): _____

Indicate amount of prorated membership dues: \$ _____

Credit Card: _____ *American Express* _____ *MasterCard* _____ *Visa*

Card Number: _____ Expiration Date: _____

Name as it appears on the card: _____

Signature: _____

BROCHURE CODE - A B C D E F G H I J K L M N O P Q R

REGISTRATION FORM

TUITION

REGISTER ONLINE: [WWW.EDUSYMP.COM/ASFNR](http://www.edusymp.com/ASFNR)

3rd Annual Meeting of the
**American Society of
Functional Neuroradiology**
Omni La Mansión del Rio
San Antonio, Texas

February 25 - 27, 2009

17.5 AMA PRA Category 1 Credit(s)TM

\$395

☐ **ASFNR Member***

*The deadline to apply for membership in order to qualify for the reduced member fee of \$395.00 is January 26, 2009.

\$495

☐ **Non Member**

\$195

☐ **Technologists** ☐ **Retired Physicians** ☐ **Fellows*** ☐ **Full-Time Military***

*A letter from your Program Director verifying your status to qualify for the reduced fee must accompany your registration.

ASFNR09

Attendance will be limited;
therefore, early registration
is strongly suggested.
**There will be a \$50 surcharge
for anyone registering after
January 16, 2009.**

Name _____

First

Middle

Last

Degree ☐ M.D. ☐ D.O. ☐ Ph.D. ☐ P.A. ☐ R.T. ☐ Other _____ Specialty _____

Facility/Organization _____ Dept. _____

☐ HOME

Street Address ☐ OFFICE _____

City _____ State _____ Zip _____

Phone _____ Fax _____ E-mail _____

How would you like to receive future meeting and DVD announcements? ☐ Mail Only ☐ E-mail Only ☐ Both Mail and E-mail

PAYMENT INFORMATION:

☐ Check Enclosed ☐ Charge to Credit Card:

Payable to: ASFNR



Card Number _____

Expires _____ Card Security Code* _____

*In order to process your registration we will need the security code on your credit card. If you have a MasterCard, Visa or Discover the 3 digit code will be found on the back of your card in the space provided for your signature (it will be the last 3 digits shown). American Express prints their 4 digit security code on the front of the card above the last digit of your AMEX number.

Signature _____

(Your signature is your authorization to charge this credit card.)

IF CREDIT CARD NAME OR BILLING ADDRESS DIFFERS FROM THE ADDRESS LISTED ABOVE,
PLEASE PROVIDE THE CORRECT BILLING ADDRESS

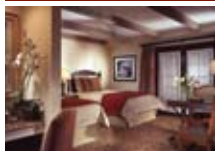
Name on Card _____

Billing Address _____

City _____ State _____ Zip _____

Please make checks payable to **ASFNR**, and mail with this completed form to **Educational Symposia, 5620 West Sligh Avenue, Tampa, Florida 33634-4490**. A \$75.00 processing charge will be made on refunds requested in writing prior to January 16, 2009. No refunds will be given on or after January 16, 2009. For further information, call (800) 338-5901 (toll-free, U.S. & Canada), (813) 806-1000 (direct), or fax (800) 344-0668 (toll-free, U.S. & Canada) or (813) 806-1001 (fax, direct), or e-mail at etrombetta@edusymp.com.

Accommodations



The Omni La Mansión del Rio expresses the romance and charm of a grand estate through the blending of Spanish Colonial architecture and European-style furnishings. This luxury hotel is in the heart of San Antonio overlooking the historic Paseo del Rio, or River Walk. Located less than nine miles from San Antonio International Airport, and in addition to its prime River Walk location, the Omni is within two blocks of The Alamo, Hard Rock Cafe, and Majestic Performing Arts Center. La Villita, Imax Theater, Rivercenter Comedy Club, and Arneson River Theater are four blocks away. Six Flags Fiesta Texas is 20 miles away and SeaWorld of Texas is 16 miles from the hotel. Hotel amenities include a heated pool, Las Canarias Restaurant, 24-hour room service, state-of-the-art fitness center, concierge, babysitting, dry cleaning, shoeshine, and gift shop, along with a self-service business center.

MAKE YOUR RESERVATION AS SOON AS POSSIBLE AS OUR ROOM BLOCK MAY SELL OUT PRIOR TO THE CUT-OFF DATE OF JANUARY 26, 2009. After this date, reservations will be accepted at the discretion of the hotel, on a space and rate available basis.

Identify yourself as a registrant of the "3rd Annual Meeting of the American Society of Functional Neuroradiology" to qualify for special discounted group room rates. Rates cannot be changed at check-in or check-out for guests who fail to identify their affiliation at the time the reservation is made.

ACCOMMODATIONS

3rd Annual Meeting of the
**American Society of
Functional Neuroradiology**

Omni La Mansión del Rio
San Antonio, Texas

February 24 - 27, 2009

Call for reservations 800-843-6664 or visit
<http://www.asfmr.org> to book your reservations online.

SPECIAL DISCOUNTED GROUP ROOM RATES:

\$245.00 per night
**Single/double
occupancy**

CHECK PREFERENCES:

- ☐ King Bed
☐ 2 Double Beds

Reservations must be made before January 26, 2009. Group room rates may be available three (3) days prior and three (3) days after the scheduled meeting dates (subject to availability and confirmation by the hotel.) Please note the rates do not reflect the current state and resort taxes currently 16.75% and are subject to change. The maximum number of people per guest room is four (4). Charges for rollaway and cribs may apply. **Deposit: All reservations must be accompanied by a first night room deposit (plus applicable taxes). Balance is payable at checkout. Cancellations must be made at least 5 days prior to arrival for deposit refund. No-shows will be charged for all nights of the reservation.** Check in time is 3:00pm; Check out is before 12:00 noon.

Name _____

Mailing Address _____

City _____ State _____ Zip _____

Daytime Phone _____ Fax _____

Date of Arrival _____ Time of Arrival _____ Date of Departure _____ Time of Departure _____

☐ I prefer to pay with the following credit card the amount of first night's stay, plus tax:



Card Number _____ Expiration Date _____

Authorization Signature _____

(Your signature is your authorization to charge this credit card)

After January 26, 2009, requests for room reservations will be on a space/rate available basis. Rates are based on single/double occupancy. To reserve your room using a credit card, you may call the hotel directly at (800) 843-6664 or visit <http://www.asfmr.org> to book your reservations online. Or, you may mail with your credit card information to: Omni La Mansión, Group Reservations, 112 College Street San Antonio, Texas 78205 "Attention Reservations". **IF YOU MAIL YOUR RESERVATION, MAKE SURE TO CALL THE HOTEL FOR YOUR CONFIRMATION NUMBER.** Your credit card will be charged the first night's room and tax charges per room at the time of the reservation. Remember to identify yourself as a registrant of the 3rd Annual Meeting of the American Society of Functional Neuroradiology in order to qualify for the special discounted group room rates. Guests will need to cancel reservations 5 days prior to arrival. The deposit is refundable if cancelled prior to this time. Any guest who fails to cancel a reservation 5 days in advance or is a "no show" will be charged. Call Professional Travel (official travel agency) at (800) 237-7230 (toll free U.S. and Canada) or (813) 806-1050 (direct) if you have any questions or problems making your hotel reservations or prefer alternate accommodations. Please photocopy this form for additional registrants.

3rd Annual Meeting of the

American Society of
**Functional
Neuroradiology**

February 25 - 27, 2009

Omni La Mansión del Rio
San Antonio, Texas

17.5 AMA PRA Category 1 Credits™

ESI Educational Symposia
5620 West Sligh Avenue
Tampa, Florida 33634-4490

3rd Annual Meeting of the

American Society of
**Functional
Neuroradiology**

February 25 - 27, 2009

Omni La Mansión del Rio
San Antonio, Texas

17.5 AMA PRA Category 1 Credits™



PRESORTED
STANDARD
U.S. POSTAGE
PAID
TAMPA, FL
PERMIT NO. 1909